



Ku-ring-gai Art Society

PO Box 229 TURRAMURRA 2074

www.ourkas.com.au

Mobile 0419 983 917

Next **General** Meeting

Tuesday 2 December 2014 at 7.30pm

Masonic Hall, Turramurra
Cnr Pacific Hwy &
Turramurra Ave



Next **Committee** Meeting

Monday 24 November 2014 at 7.30pm

Ku-ring-gai Town Hall, Pymble

President Malcolm Carver

0412 329 987 mcarver@me.com

Secretary Jan Harrington-Johnson

0400 119 211 jan.hj@iinet.net.au

Treasurer Caroline Oesterheld

0438 887 202

Patrons

Lou Klepac & Meg Stewart



Guest Speaker November ■ David Fairbairn **Portraiture**

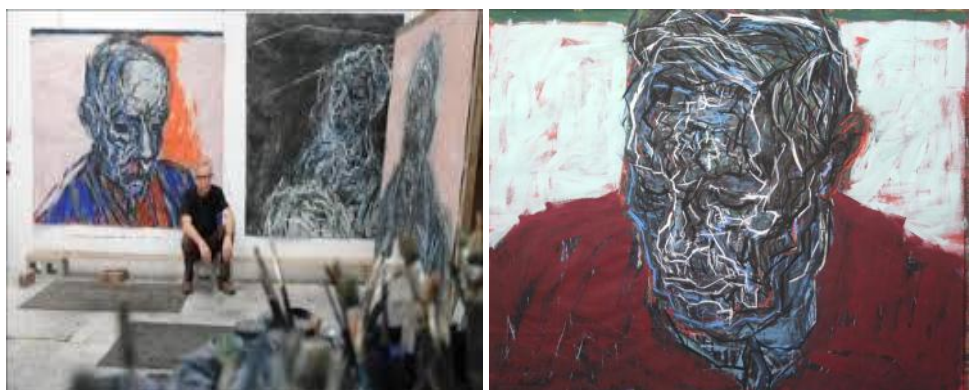
For many years David Fairbairn has been considered a leading figure in Contemporary Australian Drawing.

He was born in Zambia, Africa and came to Australia in the late 1970's. Following his schooling he did an Honours Degree in Fine Art, then earned a postgraduate scholarship to the Royal Academy School of Art, London, attending from 1974-1977. He moved to Australia in 1979. He lives in Wedderburn, a small town on the Georges River, south of Sydney, with his wife, the artist and Dobell Prize winner, Suzanne Archer, who is featured in much of his work.

Since 1981 David has received over forty awards and prizes including the Dobell Prize for Drawing and the Doug Moran National Portrait Prize. In 2012 he was awarded the Mosman Art Prize and the Sunshine Coast Art Prize. He has been selected as a Dobell Prize Finalist fifteen times and in the Archibald Prize eight times. Fairbairn teaches at the National Art School, Sydney. He has had twenty solo exhibitions since 1981 and has been in over eighty group exhibitions. Fairbairn is extensively represented in both public and private collections.

David has been working for over 30 years from one end of the art scale to the other and has seen different stratas of the art scene. He recommends following authentic role models to achieve success. Take your cue from the *top* artists. His mentors are Giacometti and Francis Bacon who's art works on the edge of figurative and abstraction making works that exist in their own right celebrating the gesture or kinetic energy of the mark. He has an overwhelming preference for line which reflects the open skeletal structure like the framework of a building. David works on 350gsm Arches watercolour paper sometimes with oil sticks, chinagraph pencils but only uses oil paint for monotypes. He starts out with etchings then draws over the top working with charcoal and drawing inks mixed with shellac to create a glaze.

David's advice is to keep working on the image, layer upon layer until you find the image. Take it outside, hose it off sometimes and keep looking!



Guest Artist
December
It's a Mystery !!! ??????



This is our **Christmas meeting** and we will have a **MYSTERY** Guest Speaker and Members are reminded to please bring a **plate of refreshments** and a **small gift** for the lucky door prize raffle on the night.



Website

Members will now see there are helpful hints for those wishing to put up their own art on the KAS website.
www.ourkas.com.au

It would be great to see some more members' work represented

Membership

We urge all members to encourage friends and fellow artists, particularly younger artists, to join our active and vigorous Society of artists.

Facebook Page

We encourage all members to go to our page and "like it"
<https://www.facebook.com/ourkassociety>

New Exhibiting Members

Selection for New Exhibiting Members:

Friday 27th March 8.30 am to 12.30pm

Friday 7th August 8.30am to 12.30 pm

Details of delivery and time of collection of works on KAS website.

New Social Members

We are pleased to welcome Susan Dill White and Veronica Turner into the Society and we look forward to their participation in the Society's activities.

From the Selection Team

Regarding artworks presented for exhibitions:

- Signatures are often too prominent and detract from a great work.
- Frames must be art frames to ensure quality is maintained.
- Backs of works must be neatly taped and labels must be of a professional standard.

Position Vacant

The Society is looking for a member who would be prepared to take on the volunteer role of membership secretary. You would need to own a computer, be able to send/receive e-mail and have a knowledge of a word processing system, plus Excel spreadsheet. The handover would be in January 2015 and would include full instruction.

Please call *Wendy Verco* for further details, on 9449 28947 or 0410 504 104.

MEMBERS NEWS

Library

A kind donation of books to the library has been made by *Gwen and John Cordner*, and the Society is grateful. Some of the books were duplicates of books already in the library and members wishing to purchase any of these can make a donation to Lifeline.

Artist News

Unfortunately our esteemed Member Doug Meares, is still in hospital and is not at all well.

Golden Jubilee Book

The production of our book is progressing well. It will be a hard cover book which will be available in 2015.

Wednesday Sketch Group

If anyone would like to join our Life Drawing Group on a Wednesday morning you will be more than welcomed.

Please contact: *Rowena Monty* 9958 2596 for further details.

SPRING EXHIBITION

Suzanne Lane reported that the exhibition had been very successful with 59 works sold. Excellent comments had been received from viewers. She proposed a vote of thanks to *Robyne Berling* and the whole team involved.

There were a few suggestions by members for improvement at future Exhibitions:

- A Master list of all works displayed at the bottom of the ramp as well as on the sales desk could be helpful as it is not practical to print a catalogue for every Exhibition.
- More prominent signage at the entrance to the Centre was desirable and the President responded that the Society was working with the Centre for best results.
- Also that the Medium should be included on the labels attached to the paintings, and it was agreed it would be considered.

The raffle raised just over \$1000 which will be donated to *Lifeline*.

Raffle Painting

The KAS Spring Exhibition Raffle painting by *Chan Dissanayake* was drawn by Guest Artist *David Fairbairn*. Congratulations to the lucky new owner of this beautiful work, *Noeline Millar* from the Central Coast.



CONGRATULATIONS

Robyne Berling Won The Peoples Choice award at Tarana Red Cross Exhibition (near Oberon)

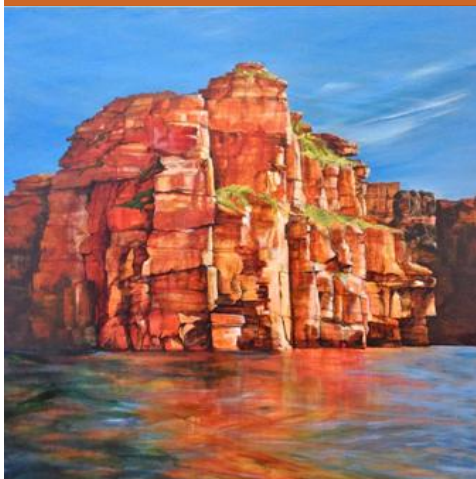
Geraldine Simmons Overall winner in the Light Space & Time online gallery 4th Annual Nature Art Exhibition with her pastel work "Black and Light". A wonderful result, as there were 627 entries from 16 countries.



FOR SALE

Lesley is an artist and is moving so wants to sell her framing materials. She has a Fletcher mat cutter, V nailer, glass cutter & flexipoint gun for sale, all in excellent condition. She also has mat board, mouldings & spare blades & v nails. All up new would be over \$7,000 - she is asking \$3,500. It is a complete framing business. Please contact Lesley if you are interested. 02 96292136
lesleysd@bigpond.net.au

EXHIBITIONS



You are warmly invited to an exhibition of paintings by KAS member

CHRISSIE LLOYD

Two Regions
The Kimberley - The Monaro

8 November - 14 December 2014

Humble House Gallery
93 Wollongong St, Fyshwick, ACT 2609
(02) 6228 1988
Gallery Hours: Sunday 10am - 4pm
www.humblehouse.com.au

'On Islands' is a Collaborative Arts Festival which runs November 13 - 30, 2014 at *Eramboo*, an Arts Environment based on 3 acres of bushland in Terrey Hills, bordering the Ku-ring-gai National Park.

A small fee of \$10 will be charged per person to attend which will help to cover afternoon or morning tea and fund the continued activities of *Eramboo* such as providing public facilities, programmes, catalogs etc.

There is information on artists, collaborations, and works available on OnIslands website:

www.onislandserambo.com

CASS Report



**CASS Art Direct
Open Studio
Weekend**

15th & 16th November 2014

This year there will be 2 KAS artist studios open with 6 KAS artists exhibiting:

Studio at 114 Shirley Road, Roseville - Artists Dee Jackson, Vivien Christian and Susan Smart and

Studio at 20 Woodbury Road, St Ives - Artists Charmaine Philips, Baith Aynsley-Lewis and Jan Harrington-Johnson

This is a unique opportunity to visit the art studios of your local artists. A great way to showcase individual artists' work and promote Ku-Ring-Gai Art Society at the same time! Lots of fun - connect with your local area (neighbours or community).

Join the CASS Art Trail around Sydney.

Booking fees: \$50 per home studio (up to 4 artists) OR \$120 per hall (up to 20 artists). www.cassartdirect.com.au

**Art of Sydney 2015 - Australia Day
Weekend Jan 22- 26 2015**

**The Terrace Room at the National
Maritime Museum, Darling Harbour**

Art-in date will be the first weekend in January - Sat 3 to Sun 4, 2015.

For entry forms contact Dee Jackson -
deejackson@deejackson.com.au

CASS turns 25 in 2015 - Yes, CASS is gearing up to celebrate its *Quarter Century* So next year in 2015 CASS is proud to offer a new workshop event 'Art at the Top'

May 29, 30 & 31 2015

Where: The Tops Conference Centre,
51 Bendena Garden, Stanwell Tops NSW

www.thetops.com.au/interactive-map



'CASS Cottage' Kandos available holiday accommodation for 6 to 7 people for \$600 per week.

Contact Dee Jackson for 'Artist of the Year' nomination forms.

Check website for all CASS details:
<http://www.combinedartsocieties.com>

West Ryde & Paddington

The Art Scene

ANNUAL SALE

MONDAY 24TH NOVEMBER TO SATURDAY 29TH NOVEMBER

15% OFF SELECTED PASTELS

HUGE SAVINGS

UP TO 30% OFF EASELS

25% OFF BRUSHES

30% OFF SELECTED PAINTS

20% OFF ALL BOOKS

15 - 30% OFF EVERYTHING IN STORE!!
CALL OR EMAIL US TODAY
www.artscene.com.au
(02) 9807 6900

Turrumurra and Lindfield

Community Bank® branches

Bendigo Bank

Our KAS Workshops 2014

Check the KAS Website for booking and payment details www.ourkas.com.au
Workshop Coordinator: Thomasin (Thomi) 0408 891 702 thomasin@bigpond.net.au
 Charmaine thanks Anne Carpenter for offering to assist with the workshops

Tony Belobrajdic Workshop Report Saturday 11th October 2014

Light & Composition in Watercolour

Bridges, buildings, boats and even the figure - Tony Belobrajdic showed us how to paint them all. Away we went, producing everything from pictures of wild animals to gentle urban scenes. Tony's tips on technique and his mastery of the medium were an inspiration. www.artiscon.com



Guy Troughton Workshop Saturday 15th November 2014

Painting Birds in Landscape

The workshop will begin with an overall introduction to what makes a bird, the shapes of birds and their structure. This will be with examples and drawing demonstrations. The class may do some drawing and interpretation in response to this. Then there will be a demonstration in watercolour of how Guy approaches painting a bird. He will discuss placement within the picture and talk about landscape elements to complete the composition. Guy will break this down into several stages so you can follow along on your own work. Each student can paint the same image as Guy or choose from a selection of Guy's or bring your own. He will guide each person through the day and hopefully everyone will have a painting well advanced or finished! Check the website for materials list and booking.

www.guytroughton.com



The Art Scene Mitchell School of Arts 18th - 24th January 2015



Visit our **NEW** website for information and online registration
www.artscenemsa.com.au



Treasurer's Report

Profit & Loss Statement 01/01/14 to 21/10/14

Exhibition Income	\$	89,401
Exhibition Expenses	\$	-74,067
Net Exhibition Income	\$	15,334
Workshop Income	\$	7,076
Workshop Expenses	\$	-5,956
	\$	1,120
Membership Fees	\$	16,371
Expenses: Guest speakers, newsletters, postage, etc	\$	-26,943
	\$	-10,572
Interest Income	\$	2,994
Net Profit/Loss	\$	8,876

Payments can be made to the Society at any time by post, direct deposit or online at website to:

Ku-ring-gai Art Society
BSB: 062 173 Account: 00902044

Please also email *Caroline* advising of your remittance
aosterh@bigpond.net.au

Ku-ring-gai Art Centre

Art Classes

Semester 2 brochure available on website (link below)

Term 4 Weekend Workshops

you may be interested in:

Watercolour Animals - Suzie Murphie or
Colour of Emotion - Mitzi Vardill

BOOKINGS

T 9424 0310
 E artcentre@kmc.nsw.gov.au
 W www.kmc.nsw.gov.au/artcentre



Plein Air Painters of Australia Venues

		Gregory's 2000		UBD 2000	
05-Dec-14	Harold Reid Rsv, Rembrandt Drive, Middle Cove	286	C8	196	H8
12-Dec-14	Harold Reid Rsv, Rembrandt Drive, Middle Cove	286	C8	196	H8
19-Dec-14	Jamieson Park - Narrabeen Lake	228	G6	158	C7
26-Dec-14	Jamieson Park - Narrabeen Lake	228	G6	158	C7

For more information please ring Jim Attril 9918 8625 or Ed Sturz 9971 5513

Please send Ku-ring-gai Art Society news to:

Linda Joyce, c/o Ku-ring-gai Art Society
 PO Box 229 Turrumurra 2074

Email: lindajoyce@optusnet.com.au

Deadline for information for next newsletter

Friday 5 December 2014